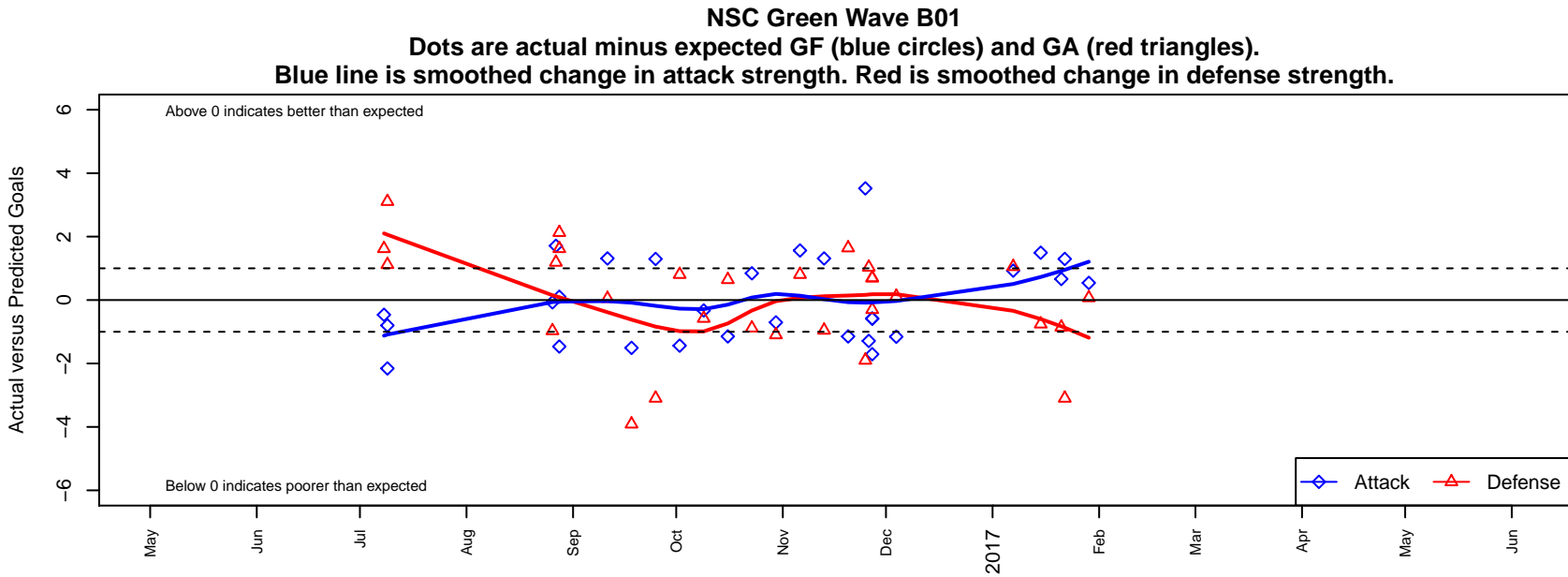


NSC Green Wave B01

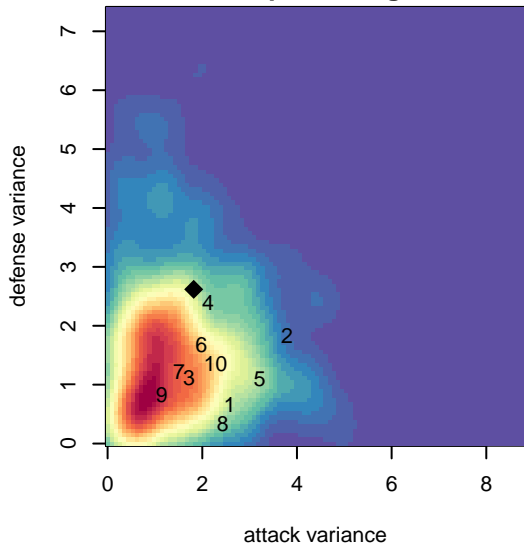
Northshore SC
 Woodinville, WA
 B01 total strength=1306
 attack=10.16 defense=3.28
 fall league = NPSL Div 2 (01) U16

alt names used:
 NSC B01 Wave
 NSC B01 Green-Wave
 NSC Wave
 NSC B01 White
 NSC 01 Wave
 NSC Wave B01 White

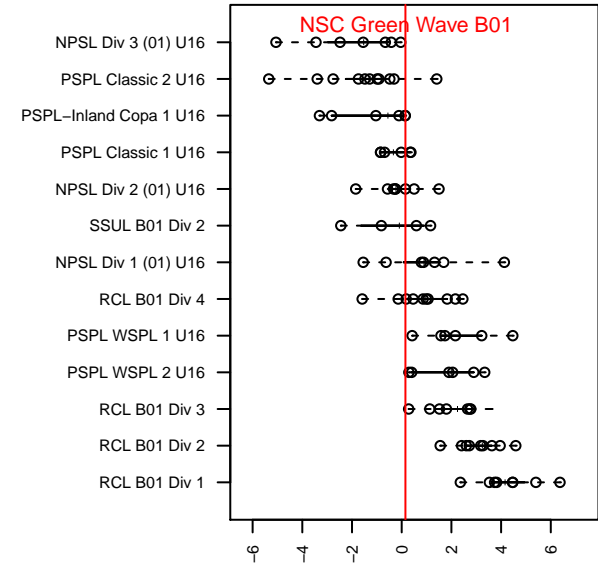
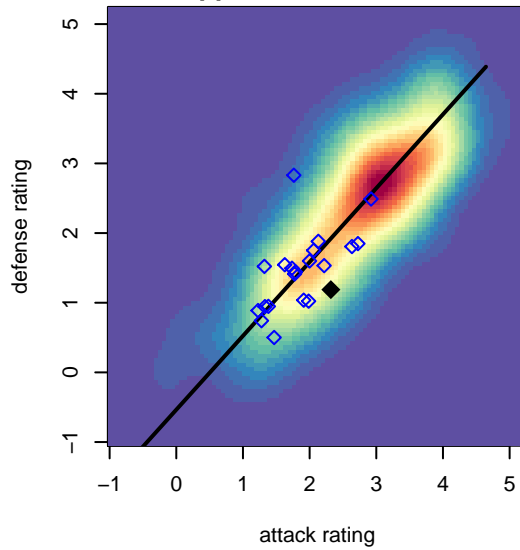
Venues played:
 2016 Seattle United Cup BU16
 2016 Sky River BU16
 2016 NPSL Division 2 (01) U16
 2016 Cranberry Cup U15-16
 2016 Founders Cup B01 Div A



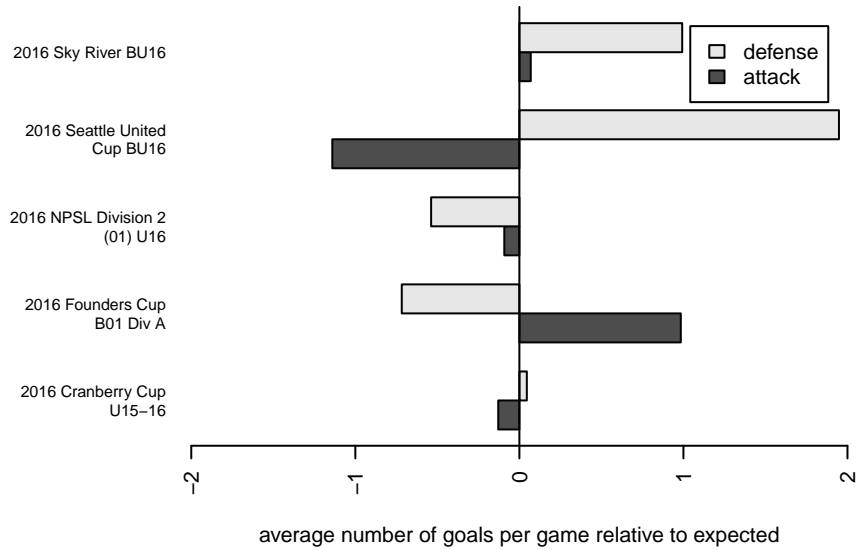
**attack and defense variance (black dot)
relative to other teams
and top 10 in region**



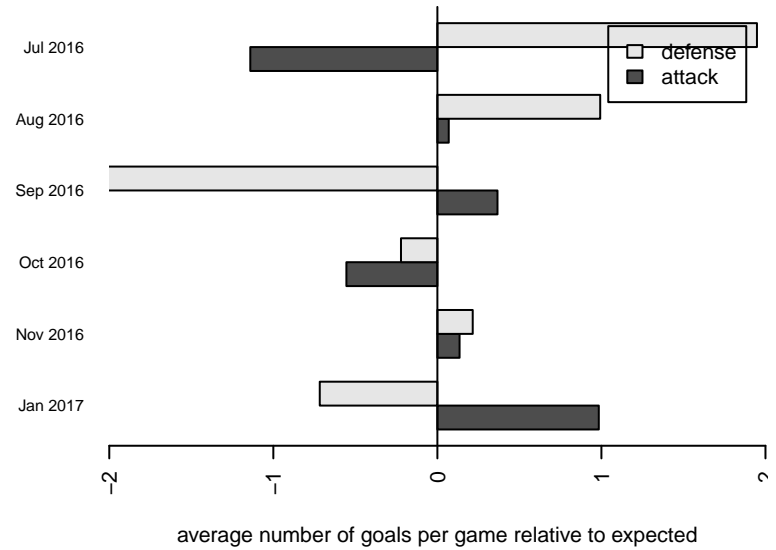
**attack and defense rating
relative to others at age
and all opponents in last 13 months**



Performance relative to 13 month average



Performance relative to 13 month average



date	home		away		venue	pred.home	pred.away
2017-01-29	STU Evolution Black B01	4	NSC Green Wave B01	2	2016 Founders Cup B01 Div A	4.07	1.46
2017-01-22	Southlake Select Vipers B01	7	NSC Green Wave B01	3	2016 Founders Cup B01 Div A	3.90	1.70
2017-01-21	NSC Green Wave B01	4	Washington Timbers Green 2 B01	2	2016 Founders Cup B01 Div A	3.34	1.14
2017-01-15	NSC Green Wave B01	3	STU Evolution Yellow B01	3	2016 Founders Cup B01 Div A	1.51	2.24
2017-01-07	Bellevue United Select B01	1	NSC Green Wave B01	4	2016 Founders Cup B01 Div A	2.05	3.07
2016-12-04	Seattle United Shoreline Blue B01	1	NSC Green Wave B01	1	2016 NPSL Division 2 (01) U16	1.12	2.16
2016-11-27	NSC Green Wave B01	0	MBSOS FC B01	1	2016 Cranberry Cup U15-16	0.58	1.70
2016-11-27	NSC Green Wave B01	1	Fuerza FC Academy B01	1	2016 Cranberry Cup U15-16	2.71	1.69
2016-11-27	MBSOS FC B01	2	NSC Green Wave B01	0	2016 Cranberry Cup U15-16	1.70	0.58
2016-11-26	NSC Force B02	0	NSC Green Wave B01	3	2016 Cranberry Cup U15-16	1.03	4.29
2016-11-25	NSC Annex B01	3	NSC Green Wave B01	7	2016 Cranberry Cup U15-16	1.10	3.48
2016-11-20	NSC Green Wave B01	1	Seattle United W Blue B01	1	2016 NPSL Division 2 (01) U16	2.15	2.64
2016-11-13	Kent United White B01	2	NSC Green Wave B01	5	2016 NPSL Division 2 (01) U16	1.05	3.69
2016-11-06	BIFC Black B01	1	NSC Green Wave B01	4	2016 NPSL Division 2 (01) U16	1.81	2.44
2016-10-30	NSC Green Wave B01	1	Southlake Select Vipers B01	5	2016 NPSL Division 2 (01) U16	1.70	3.90
2016-10-23	NSC Green Wave B01	3	Seattle United Shoreline Blue B01	2	2016 NPSL Division 2 (01) U16	2.16	1.12
2016-10-16	Seattle United W Blue B01	2	NSC Green Wave B01	1	2016 NPSL Division 2 (01) U16	2.64	2.15
2016-10-09	NSC Green Wave B01	2	PSA Force Black B01	2	2016 NPSL Division 2 (01) U16	2.33	1.42
2016-10-02	NSC Green Wave B01	1	BIFC Black B01	1	2016 NPSL Division 2 (01) U16	2.44	1.81
2016-09-25	Southlake Select Vipers B01	7	NSC Green Wave B01	3	2016 NPSL Division 2 (01) U16	3.90	1.70
2016-09-18	Newport FC Barca B01	6	NSC Green Wave B01	2	2016 NPSL Division 2 (01) U16	2.09	3.51
2016-09-11	NSC Green Wave B01	5	Kent United White B01	1	2016 NPSL Division 2 (01) U16	3.69	1.05
2016-08-28	NSC Green Wave B01	2	Gala FC B01	0	2016 Sky River BU16	1.90	2.13
2016-08-28	NSC Green Wave B01	0	Seattle United S Blue B01	1	2016 Sky River BU16	1.46	2.62
2016-08-27	FC Edmonds Sting B02	0	NSC Green Wave B01	8	2016 Sky River BU16	1.19	6.29
2016-08-26	NSC Green Wave B01	2	WA Rush Nero B01	2	2016 Sky River BU16	2.07	1.03
2016-07-09	NPSA Titans Navy B01	2	NSC Green Wave B01	0	2016 Seattle United Cup BU16	5.11	0.80
2016-07-09	NSC Green Wave B01	0	Seattle United Shoreline Blue B01	0	2016 Seattle United Cup BU16	2.16	1.12

date	home		away		venue	pred.home	pred.away
2016-07-08	NSC Green Wave B01	1	Seattle United S Blue B01	1	2016 Seattle United Cup BU16	1.46	2.62